

PROTECH Balcony

www.protech-balcony.com



SYSTEM ADVANTAGES

TRANSPARENT, NON-FILM

ELIMINATES THE NEED TO REMOVE EXISTING FLOORING

APPLICABLE ON CLINKER, PORCELAIN STONWARE, CEMENT, TERRACOTTA, STONE AND COURSE AGGLOMERATES

PENETRATES AND SEALS CRACKS OF UP TO 1MM

WALKABLE IN TWO HOURS, AFTER ENSURING ANY EXCESS PRODUCT HAS BEEN REMOVED

RESISTANT TO THERMAL SHOCKS AND UV RAYS

HIGH YIELD AND LONG-LASTING EFFICACY



Find out more at:
www.protech-balcony.com

AZICHEM production has 6 practical lines, listed below, for wide-ranging construction and renovation needs.

Find out more at: www.azichem.com



PROTECH Balcony



Transparent non-film waterproofing to be applied without needing to demolish existing flooring

STOPS WATER INFILTRATION ON TERRACES, BALCONIES AND TILED STAIRS



Via G.Gentile 16/A 46044 - Goito (MN) Italy
Ph. +39 0376.604185 - Fax +39 0376.604398
info@azichem.com - www.azichem.com



PROTECH BALCONY:

TRANSPARENT, NON-FILM WATERPROOFING FOR HORIZONTAL SURFACES NOT SUBJECT TO VEHICULAR TRAFFIC

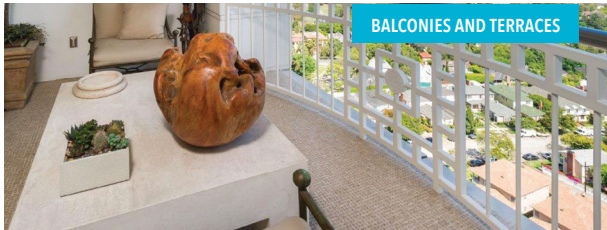
www.protech-balcony.com

PROTECH Balcony



PROTECH BALCONY is a concentrated solution of catalysed organic polymers and silicon resins that create an extensive internal waterproof barrier that is non-film, highly water-repellent, and able to fill and seal any porosity and micro-cracks up to 1 mm, without inhibiting transpiration.

For over thirty years, the **PROTECH BALCONY** system has quickly and easily remedied water infiltration and permeation problems on **terraces, balconies, staircases, tiled showers, concrete and masonry works**, resolutely saving time and money.



APPLICATION SEQUENCE



- 1 DEEP CLEANING OF TILED FLOORING**
Onto the surface, pour **DETERG-A** detergent diluted with water at a ratio of 1:4, then distribute the solution with a push broom.



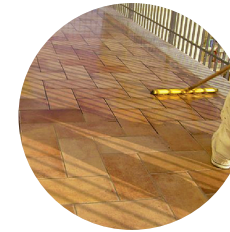
- 2 SEALING JOINTS TO STOP ANY POSSIBLE MOVEMENT**
(Effectuate only if and where necessary)*
Seal any joints that create movement, using the polyurethane sealant **PROTECH FLEX** in its extrudable cartridge.



- 3 APPLICATION OF THE SPECIAL TWO-COMPONENT WATERPROOF SEALANT IN THE JOINTS BETWEEN THE TILES**
(Fill only if and where necessary.)
Apply **STUCCO BALCONY**, using a metal putty knife or a gloved hand.



- 4 POURING PROTECH BALCONY ON THE SURFACE TO BE TREATED**
Allow any grouting in the joints between the tiles to harden then pour **PROTECH BALCONY** on the surfaces to be treated.
*PLEASE NOTE: Only apply the product on dry surfaces. ***



- 5 APPLYING PROTECH BALCONY ON THE SURFACE TO BE TREATED**
Apply and distribute **PROTECH BALCONY** on the entire surface to be waterproofed, using a push broom.



- 6 TIPS FOR USING PROTECH BALCONY**
Keep going with the application until all difficult spots have been covered with **PROTECH BALCONY**.



- 7 REMOVING EXCESS RESIDUE OF PROTECH BALCONY**
About an hour after application, use nitro thinner to remove any surplus of **PROTECH BALCONY**, which can be detected by traces of whitish residue caused by stagnation in small depressions of the flooring or from excess product being applied.



- 8 COMPLETE WATERPROOFING**
Applying the products properly, in accordance with this sequence, will result in the treated surfaces showing a "pearl effect" when struck by rain, with a unique hydrophobisation typical of drops of water on a lotus flower.

* Preliminarily, insert a length of polyethylene foam **FILTENE FONDOGIUNTO 10** at the base of the joint before applying the specific adhesive primer **PROTECH FLEX PRIMER** on the walls of the joint.

** Do not apply **PROTECH BALCONY** when rain is forecast nor immediately after a downpour, as this may impact its effectiveness. Always wait until the surfaces to be treated are perfectly dry.